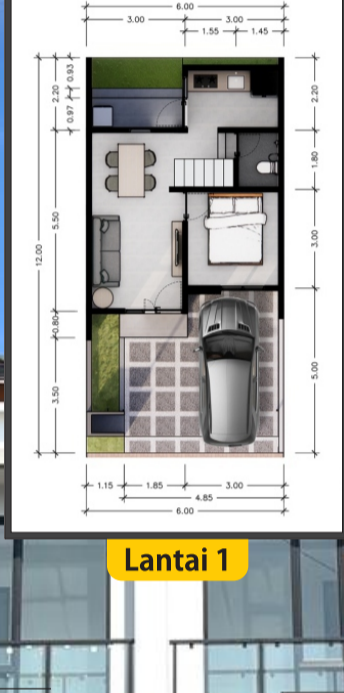


**NPA REI : 10.00224**



**Tipe 72**



**Lantai 1**



**Lantai 2**

**DENAH**

**SPESIFIKASI BANGUNAN**

Pondasi	Batu Kali, Foot Palte	Genteng	Beton
Struktur	Cakar Ayam, Beton Bertulang	Plafond	Gypsum
Dinding	Bata Merah Plester Finishing Aci Halus	Kusen	Aluminium
Lantai Rumah	Granite Tile 60 X 60	Pintu	Double Multiplex - Finishing HPL
Lantai Carport	Keramik Motif 60 X 60	Sanitair	TOTO
Lantai Kamar Mandi	Keramik 30 X 30	Cat Luar	Jotun (JotaShield)
Dinding Kamar Mandi	Keramik 30 X 60	Cat Dalam	Jotun (Majestic)
Rangka Atap	Baja Ringan	Listrik	2.200 VA
		Sumber Air	PDAM

**DISCLAIMER**

Images, sizes, shapes listed in brochures and websites are general information related to products. Images, sizes, shapes can change at any time, changes in brochures and websites are non-binding and it is not the responsibility of the developer to inform them.



**2 MENIT** KE HOSPITAL RAJAWALI CITRA

**5 MENIT** KE PUSAT PERBELANJAAN

**7 MENIT** KE KAMPUS STIKES

**10 MENIT** KE TERMINAL GIWANGAN

"DENGAN LOKASI YANG STRATEGIS, BERADA PERSIS DI PINGGIR JALAN UTAMA YANG BERNILAI TINGGI"

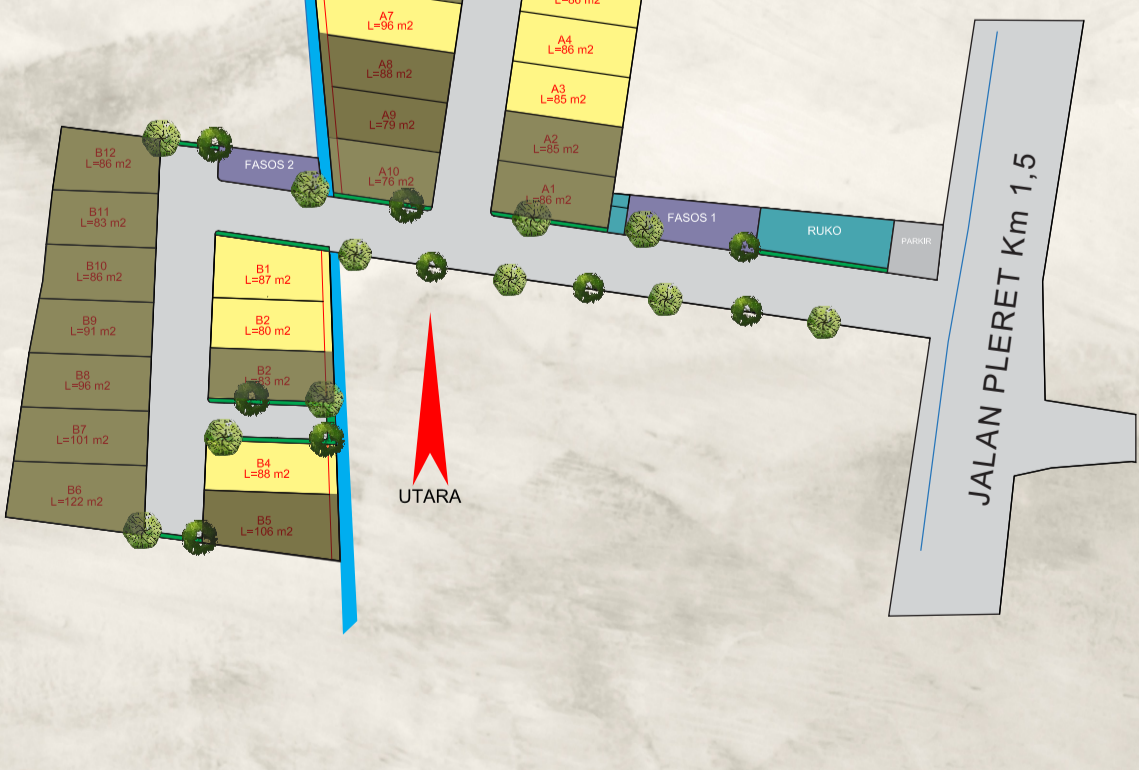
**FASILITAS**



virtual 3d

per/maret 2023

**SITEPLAN**



**MAP LOKASI**



SCAN LOKASI

**Office:**  
PT. Darminto Baru Propertindo  
Jl. Nyi Truntum, Pleret, Bantul  
email : dmpropertyid@gmail.com

Telp. (0274) 441215 / 0812-3008-3006